

Flygt 3152.350

Table of Contents

1 Introduction.....	2
1.1 Specially approved products.....	2
2 Product Description.....	3
2.1 The data plate.....	3
2.2 Product denomination.....	3
3 Exploded View.....	5
3.1 Drive Unit.....	5
3.1.1 Standard.....	5
3.2 Hydraulic Unit.....	6
3.2.1 FP_LT/HT.....	6
3.2.2 F_LT/HT.....	7
3.3 Installation Components.....	8
3.3.1 FP.....	8
3.3.2 FS.....	9
3.3.3 FJ.....	10
4 List of Parts.....	11
4.1 3152.350.....	11

1 Introduction

Purpose of this manual

The purpose of this manual is to provide necessary information on spare parts and accessories order.

Disclaimer

Always use genuine Flygt parts. The use of other spare parts or accessories can invalidate any claims for warranty or compensation. Xylem does not take any responsibility for damages that are caused by the use of non-original parts. For more information, contact your local sales and service representative.

Data for ordering spare parts

The following information is needed for spare part orders:

- Serial number of the product
- Part number
- Quantity of bulk material, see * in tables

1.1 Specially approved products

Qualification of personnel

Only Xylem or Xylem-authorized service personnel may undertake repair work on specially approved products.

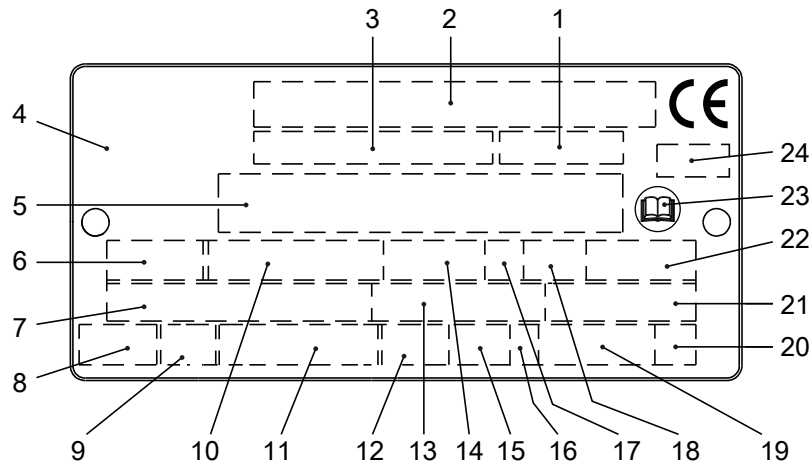
Dimensional accuracy inspection

Spare parts marked with (Ex) after the part number are subject to dimensional accuracy inspection when used in specially approved products.

2 Product Description

2.1 The data plate

The data plate is a metal label that is located on the main body of the products. The data plate lists key product specifications. Specially approved products also have an approval plate.



1. Curve code or Propeller code
2. Serial number
3. Product number
4. Country of origin
5. Additional information
6. Phase; type of current; frequency
7. Rated voltage
8. Thermal protection
9. Thermal class
10. Rated shaft power
11. International standard
12. Degree of protection
13. Rated current
14. Rated speed
15. Maximum submergence
16. Direction of rotation: L=left, R=right
17. Duty class
18. Duty factor
19. Product weight
20. Locked rotor code letter
21. Power factor
22. Maximum ambient temperature
23. Read installation manual
24. Notified body, only for EN-approved Ex products

Figure 1: The data plate

2.2 Product denomination

Reading instruction

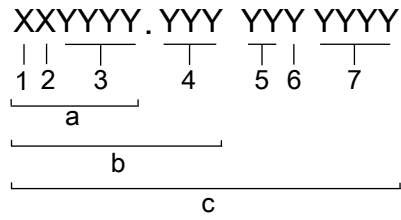
In this section, code characters are illustrated accordingly:

X = letter

Y = digit

The different types of codes are marked up with a, b and c. Code parameters are marked up with numbers.

Codes and parameters



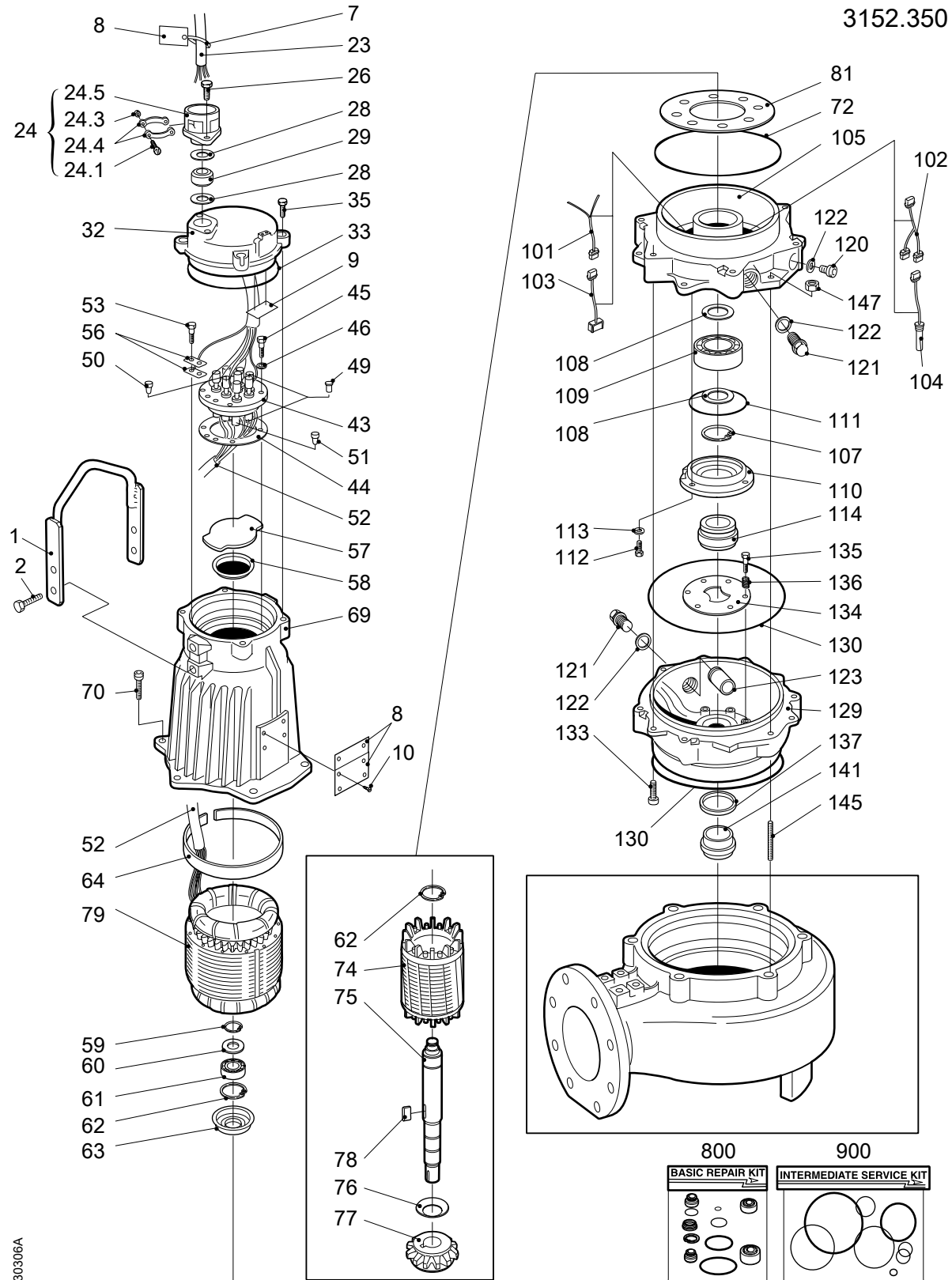
WS006265B

Type of Callout	Number	Indication
Type of code	a	Sales denomination
	b	Product code
	c	Serial number
Parameter	1	Hydraulic end
	2	Type of installation
	3	Sales code
	4	Version
	5	Production year
	6	Production cycle
	7	Running number

3 Exploded View

3.1 Drive Unit

3.1.1 Standard



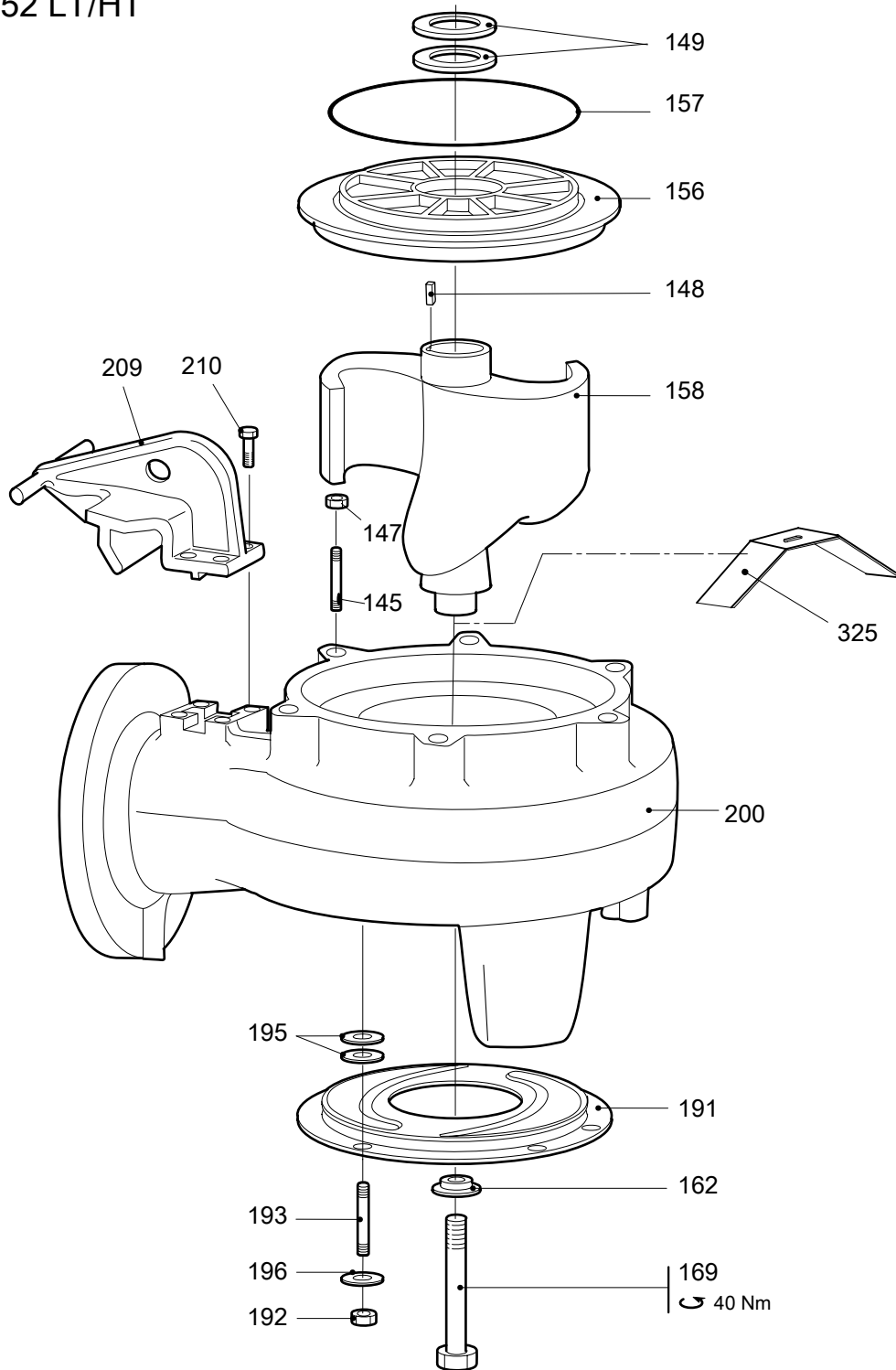
30306A

3.2 Hydraulic Unit

3.2.1 FP_LT/HT

LT, curve: 488-493, 690, 691, 693. HT, curve: 494-496.

FP_3152 LT/HT

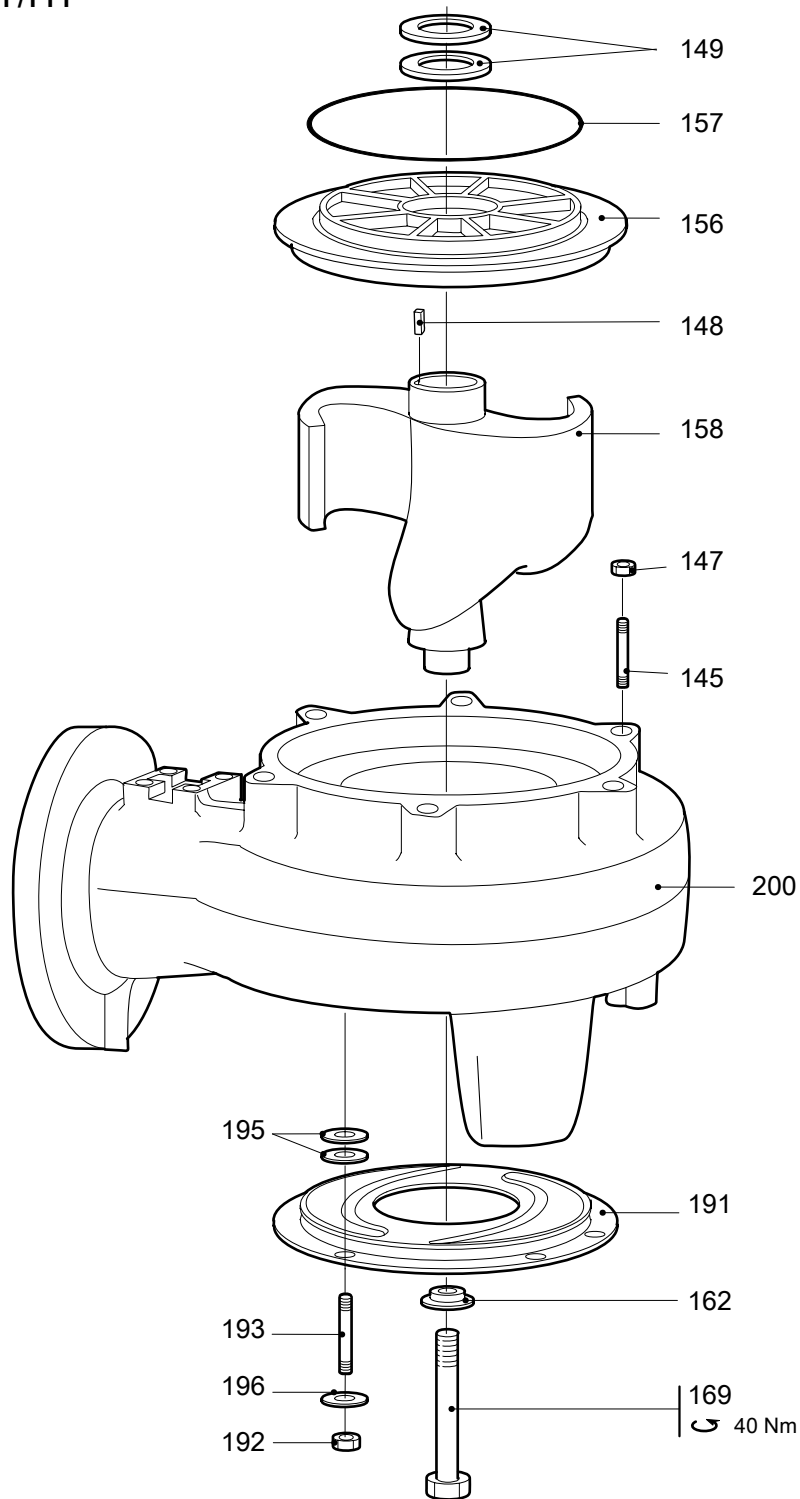


30335B

3.2.2 F_LT/HT

LT, curve: 488-493, 690, 691, 693. HT, curve: 494-496.

F_3152 LT/HT

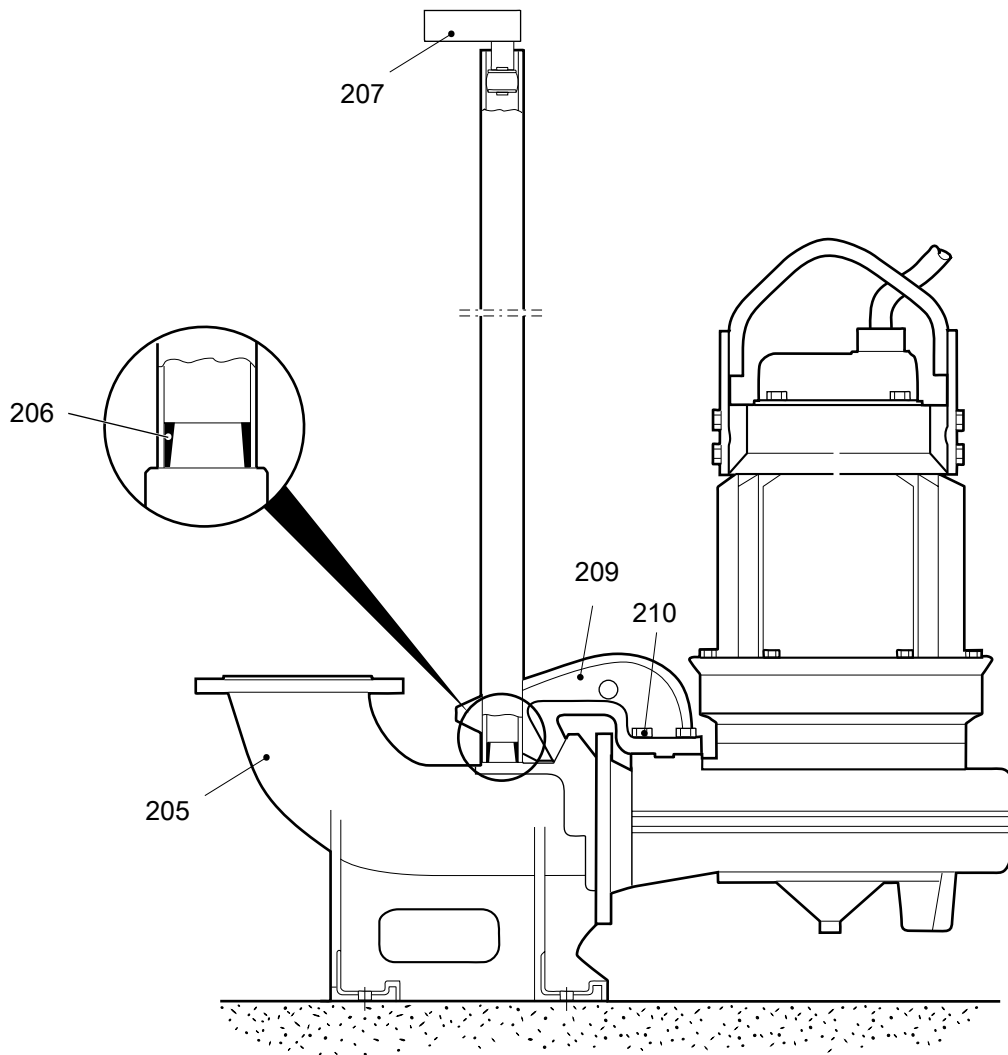


30336A

3.3 Installation Components

3.3.1 FP

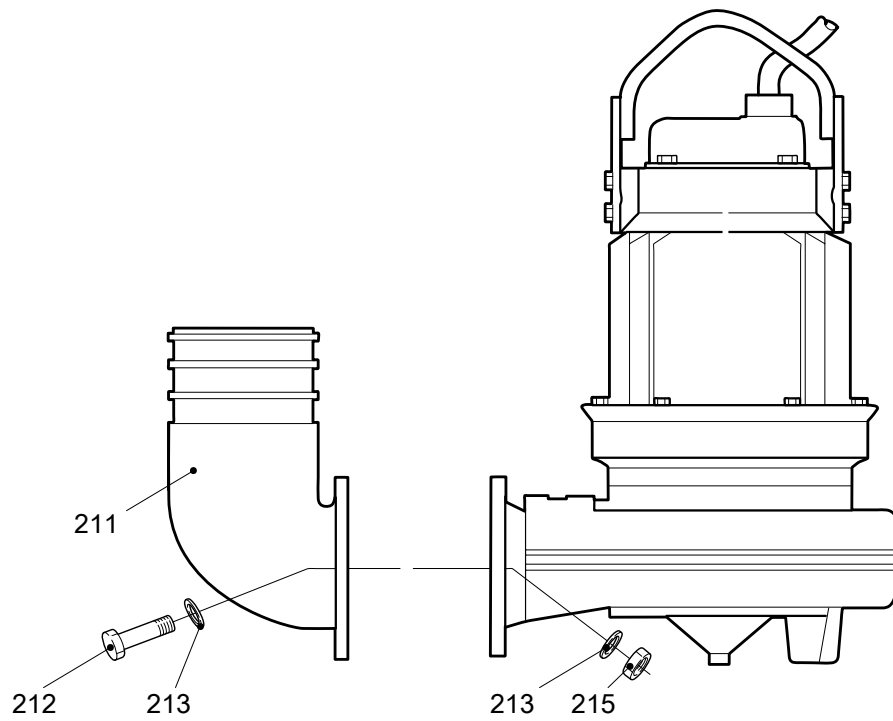
FP 3152.350



30377A

3.3.2 FS

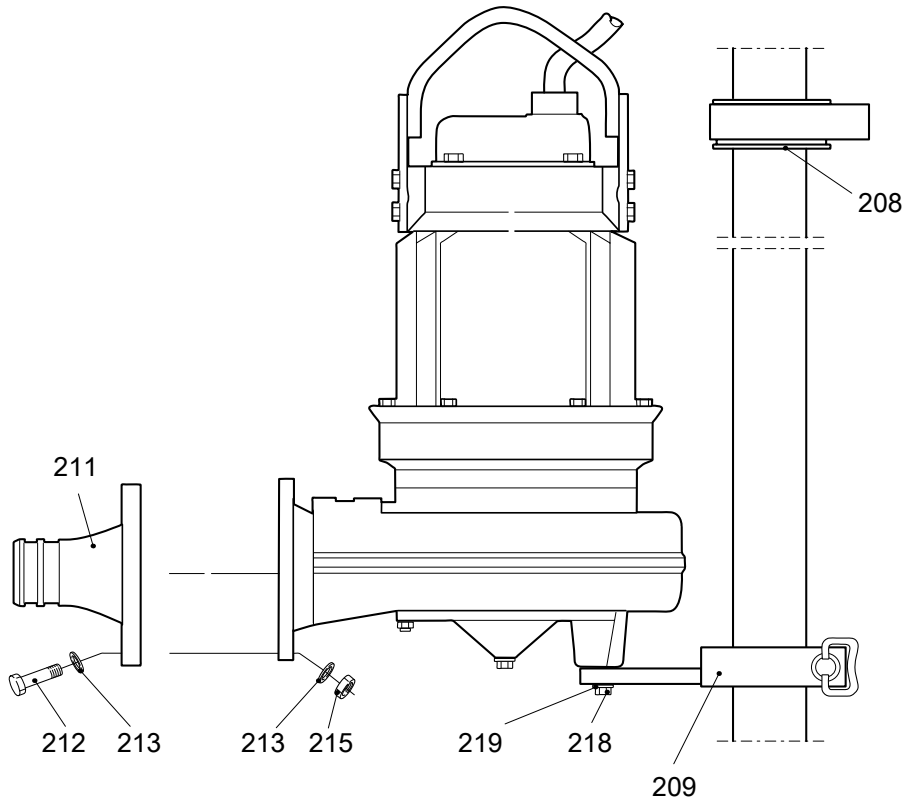
FS 3152.350



30378A

3.3.3 FJ

FJ 3152.350



30376A

4 List of Parts

4.1 3152.350

Pos. No	Part. No	Type	Denomination	Qty/Version
				350
1	510 79 00		Lifting handle	1
2	81 41 55		Hexagon head screw M12X30-A2-70	4
7	83 45 59		Cable tie 200X2.4 PA 6/6 -55+105	1
8	630 68 00		Data plate USE 6306801 AS SPARE PART	2
9	427 13 00		Marking tape	1
9	698 77 00		Connection plate	1
9	698 86 00		Connection plate	1
9	698 75 00		Connection plate	1
9	550 24 00		Connection plate	1
9	550 23 00		Connection plate (CLS)	1
9	550 22 00		Connection plate (FLS)	1
9	550 21 00		Connection plate (FLS+CLS)	1
10	82 20 88		Drive screw 4X5-A2/A4	10
23	94 20 56		Motor cable subcab 4G6+2X1.5	*
23	94 20 82		Motor cable subcab 7G2.5+2X1.5	*
23	94 19 80		Motor cable subcab 7G6+S(2X0.5)	*
23	94 21 08		Motor cable SUBCAB 8AWG/3-2-1-GC	*
23	94 21 09		Motor cable SUBCAB 6AWG/3-2-1-GC	*
23	94 21 10		Motor cable 4AWG/3-2-1-GC	*
24	642 17 00		Entrance flange (20)-32 MM	1
26	82 00 69		Hex.socket hd screw M12X30-A2-70	2
32	392 00 19		Entrance cover	1
33	82 74 93		O-ring 199.3X5.7 NBR	1
35	82 00 69		Hex.socket hd screw M12X30-A2-70	4
43	426 84 00		Con.term.board unit	1
44	82 74 76		O-ring 114.5X3.0 NBR	1
45	81 41 06		Hexagon head screw M8X25-A2-70	4
46	82 35 16		Plain washer 8.4X16X1.6-A2-140HV	4
49	83 42 29		End sleeve 4 MM2; L=10 MM	6
49	83 42 36		End sleeve 0.75 MM2; L=6 MM	2
49	83 42 28		End sleeve 2.5 MM2; L=7 MM	6
49	83 42 29		End sleeve 4 MM2; L=10 MM	12
49	83 42 30		End sleeve 6 MM2; L=10 MM	6
49	83 42 35		End sleeve 10 MM2; L=12 MM	6
49	83 42 28		End sleeve 2.5 MM2; L=7 MM	9
49	83 42 30		End sleeve 6 MM2; L=10 MM	4
49	83 42 38		End sleeve 1.5 MM2; L=7 MM	2
49	83 42 28		End sleeve 2.5 MM2; L=7 MM	7

Pos. No	Part. No	Type	Denomination	Qty/Version
				350
49	83 42 30		End sleeve 6 MM2; L=10 MM	7
49	83 42 30		End sleeve 6 MM2; L=10 MM	3
49	83 42 35		End sleeve 10 MM2; L=12 MM	4
49	83 42 35		End sleeve 10 MM2; L=12 MM	1
49	83 42 39		End sleeve 16 MM2; L=12 MM	3
50	83 42 67		Terminal block 600V/20A UL	1
51	83 42 65		Terminal block 600V/20A UL	1
51	83 42 65		Terminal block 600V/20A UL	2
51	83 42 65		Terminal block 600V/20A UL	4
52	94 05 17		Insulating hose D=20 MM	*
53	81 41 04		Hexagon head screw M8X20-A2-70	2
56	303 09 00		Earthing plate FM/PTB	2
57	395 61 00		Disc	1
58	319 09 01		Cover	1
59	82 58 96		Retaining ring SGA 25	1
60	82 44 09		Supporting washer 25X35X2	1
61	82 46 36		Roller bearing NU 206 ECP C3 30X62X16	1
62	82 59 09		Retaining ring SGA 48	1
62	82 62 12		Retaining ring SGH 62	1
63	510 85 00		Protective washer	1
64	426 95 00		Ring	1
69	510 81 00		Stator housing	1
70	82 00 71		Hex.socket hd screw M12X40-A2-70	6
72	82 74 98		O-ring 249.3X5.7 NBR	1

Pos. No	Part. No	Type	Denomination	Qty/Version
				350
74	529 90 01		Rotor Stator 3-phase 60 Hz 4-poles 380V D P2=11,20kW/15hp Stator 3-phase 50 Hz 4-poles 400V D P2=9kW Stator 3-phase 60 Hz 4-poles 400V D P2=11,20kW/15hp Stator 3-phase 50 Hz 4-poles 660V-690V Y 380V-400V D P2=7,50kW Stator 3-phase 60 Hz 4-poles 440V-460V YSER 220V-230V Y// P2=11,20kW/15hp Stator 3-phase 50 Hz 4-poles 190V-200V D P2=9kW Stator 3-phase 60 Hz 4-poles 200V-220V D P2=11,20kW/15hp Stator 3-phase 50 Hz 4-poles 380V-400V Y 220V-230V D P2=9kW Stator 3-phase 60 Hz 4-poles 440V-460V Y 260V D P2=11,20kW/15hp Stator 3-phase 50 Hz 4-poles 400V-440V D P2=9kW Stator 3-phase 60 Hz 4-poles 480V D P2=11,20kW/15hp Stator 3-phase 50 Hz 4-poles 500V-550V D P2=9kW Stator 3-phase 60 Hz 4-poles 575V-600V D P2=11,20kW/15hp Stator 3-phase 50 Hz 4-poles 380V-400V Y 220V-230V D P2=7,50kW Stator 3-phase 60 Hz 4-poles 380V Y 220V-230V D P2=11,20kW/15hp Stator 3-phase 50 Hz 4-poles 660V-690V Y 380V-400V D P2=9kW Stator 3-phase 60 Hz 4-poles 440V-460V D P2=11,20kW/15hp	1

Pos. No	Part. No	Type	Denomination	Qty/Version
				350
74	529 90 00		Rotor Stator 3-phase 60 Hz 4-poles 440V-460V YSER 220V-230V Y// P2=14,90kW/20hp Stator 1-phase 60 Hz 4-poles 220V-240V P2=11,90kW/16hp Stator 3-phase 50 Hz 4-poles 190V-200V Y P2=13,50kW Stator 3-phase 60 Hz 4-poles 200V-220V Y P2=14,90kW/20hp Stator 3-phase 50 Hz 4-poles 400V-440V D P2=13,50kW Stator 3-phase 60 Hz 4-poles 480V D P2=14,90kW/20hp Stator 3-phase 50 Hz 4-poles 400V Y 230V D P2=13,50kW Stator 3-phase 50 Hz 4-poles 190V-200V D P2=13,50kW Stator 3-phase 60 Hz 4-poles 200V-220V D P2=14,90kW/20hp Stator 3-phase 50 Hz 4-poles 690V Y 400V D P2=13,50kW Stator 3-phase 60 Hz 4-poles 380V Y 220V-230V D P2=14,90kW/20hp Stator 3-phase 60 Hz 4-poles 380V D P2=14,90kW/20hp Stator 3-phase 50 Hz 4-poles 500V-550V D P2=13,50kW Stator 3-phase 60 Hz 4-poles 575V-600V D P2=14,90kW/20hp Stator 3-phase 50 Hz 4-poles 380V Y 220V D P2=13,50kW Stator 3-phase 60 Hz 4-poles 440V-460V Y 260V D P2=14,90kW/ 20hp Stator 3-phase 50 Hz 4-poles 346V-350V D P2=13,50kW Stator 3-phase 50 Hz 4-poles 660V Y 380V D P2=13,50kW Stator 3-phase 60 Hz 4-poles 440V-460V D P2=14,90kW/20hp Stator 3-phase 50 Hz 4-poles 400V D P2=13,50kW Stator 3-phase 60 Hz 4-poles 400V D P2=14,90kW/20hp	1

Pos. No	Part. No	Type	Denomination	Qty/Version
				350
74	529 90 02		Rotor Stator 3-phase 60 Hz 6-poles 380V Y 220V-230V D P2=10,40kW/14hp Stator 3-phase 60 Hz 6-poles 440V-460V YSER 220V-230V Y// P2=10,40kW/14hp Stator 3-phase 50 Hz 6-poles 690V D P2=8,80kW Stator 3-phase 50 Hz 6-poles 400V D P2=8,80kW Stator 3-phase 60 Hz 6-poles 400V D P2=10,40kW/14hp Stator 3-phase 50 Hz 6-poles 690V Y 400V D P2=8,80kW Stator 3-phase 50 Hz 6-poles 660V Y 380V D P2=8,80kW Stator 3-phase 60 Hz 6-poles 440V-460V D P2=10,40kW/14hp Stator 3-phase 50 Hz 6-poles 400V-440V D P2=8,80kW Stator 3-phase 60 Hz 6-poles 480V D P2=10,40kW/14hp Stator 3-phase 60 Hz 6-poles 380V D P2=10,40kW/14hp Stator 3-phase 50 Hz 6-poles 380V Y 220V D P2=8,80kW Stator 3-phase 60 Hz 6-poles 440V-460V Y 260V D P2=10,40kW/ 14hp Stator 3-phase 50 Hz 6-poles 500V-550V D P2=8,80kW Stator 3-phase 60 Hz 6-poles 575V-600V D P2=10,40kW/14hp Stator 3-phase 50 Hz 6-poles 400V Y 230V D P2=8,80kW Stator 3-phase 50 Hz 6-poles 190V-200V D P2=8,80kW Stator 3-phase 60 Hz 6-poles 200V-220V D P2=10,40kW/14hp	1
75	536 91 00		Shaft	1
76	83 39 15		Disc spring	1
77	529 92 00		Coupling	1
78	80 70 73		Parallel key	1
79	595 55 02		Stator 25-11-4f 3-phase 50 Hz 4-poles 380V-400V Y 220V-230V D P2=7,50kW	1
79	595 55 01		Stator 25-11-4f 3-phase 50 Hz 4-poles 660V-690V Y 380V-400V D P2=7,50kW	1
79	426 83 12		Stator 25-11-4a 3-phase 60 Hz 4-poles 440V-460V YSER 220V-230V Y// P2=11,20kW/ 15hp	1

Pos. No	Part. No	Type	Denomination	Qty/Version
				350
79	426 83 28		Stator 25-11-4a 3-phase 50 Hz 4-poles 190V-200V D P2=9kW	1
79	426 83 29		Stator 25-11-4a 3-phase 60 Hz 4-poles 200V-220V D P2=11,20kW/15hp	1
79	426 83 30		Stator 25-11-4a 3-phase 60 Hz 4-poles 380V Y 220V-230V D P2=11,20kW/15hp	1
79	426 83 34		Stator 25-11-4a 3-phase 60 Hz 4-poles 380V D P2=11,20kW/15hp	1
79	426 83 38		Stator 25-11-4a 3-phase 50 Hz 4-poles 380V-400V Y 220V-230V D P2=9kW 3-phase 60 Hz 4-poles 440V-460V Y 260V D P2=11,20kW/15hp	1
79	426 83 40		Stator 25-11-4a 3-phase 50 Hz 4-poles 660V-690V Y 380V-400V D P2=9kW 3-phase 60 Hz 4-poles 440V-460V D P2=11,20kW/15hp	1
79	426 83 44		Stator 25-11-4a 3-phase 50 Hz 4-poles 400V D P2=9kW 3-phase 60 Hz 4-poles 400V D P2=11,20kW/15hp	1
79	426 83 52		Stator 25-11-4a 3-phase 50 Hz 4-poles 400V-440V D P2=9kW 3-phase 60 Hz 4-poles 480V D P2=11,20kW/15hp	1
79	381 26 12		Stator 25-15-4a 3-phase 50 Hz 4-poles 500V-550V D P2=9kW 3-phase 60 Hz 4-poles 575V-600V D P2=11,20kW/15hp	1
79	381 26 28		Stator 25-15-4a 3-phase 60 Hz 4-poles 440V-460V YSER 220V-230V Y// P2=14,90kW/ 20hp 1-phase 60 Hz 4-poles 220V-240V P2=11,90kW/16hp	1
79	381 26 29		Stator 25-15-4a 3-phase 50 Hz 4-poles 190V-200V D P2=13,50kW 3-phase 60 Hz 4-poles 200V-220V D P2=14,90kW/20hp	1
79	381 26 30		Stator 25-15-4a 3-phase 60 Hz 4-poles 380V Y 220V-230V D P2=14,90kW/20hp	1
79	381 26 34		Stator 25-15-4a 3-phase 60 Hz 4-poles 380V D P2=14,90kW/20hp	1
79	381 26 35		Stator 25-15-4a 3-phase 50 Hz 4-poles 380V Y 220V D P2=13,50kW 3-phase 60 Hz 4-poles 440V-460V Y 260V D P2=14,90kW/20hp	1
79	381 26 01		Stator 25-15-4a 3-phase 50 Hz 4-poles 346V-350V D P2=13,50kW 3-phase 50 Hz 4-poles 400V Y 230V D P2=13,50kW	1

Pos. No	Part. No	Type	Denomination	Qty/Version	
				350	
79	381 26 38		Stator 25-15-4a	3-phase 50 Hz 4-poles 660V Y 380V D P2=13,50kW 3-phase 60 Hz 4-poles 440V-460V D P2=14,90kW/20hp	1
79	381 26 27		Stator 25-15-4a	3-phase 50 Hz 4-poles 190V-200V Y P2=13,50kW 3-phase 60 Hz 4-poles 200V-220V Y P2=14,90kW/20hp	1
79	381 26 40		Stator 25-15-4a	3-phase 50 Hz 4-poles 400V D P2=13,50kW 3-phase 60 Hz 4-poles 400V D P2=14,90kW/20hp	1
79	381 26 44		Stator 25-15-4a	3-phase 50 Hz 4-poles 400V-440V D P2=13,50kW 3-phase 60 Hz 4-poles 480V D P2=14,90kW/20hp	1
79	381 26 52		Stator 25-15-4a	3-phase 50 Hz 4-poles 500V-550V D P2=13,50kW 3-phase 60 Hz 4-poles 575V-600V D P2=14,90kW/20hp	1
79	381 26 39		Stator 25-15-4a	3-phase 50 Hz 4-poles 690V Y 400V D P2=13,50kW	1
79	381 33 28		Stator 25-15-6a	3-phase 50 Hz 6-poles 190V-200V D P2=8,80kW 3-phase 60 Hz 6-poles 200V-220V D P2=10,40kW/14hp	1
79	381 33 29		Stator 25-15-6a	3-phase 60 Hz 6-poles 380V Y 220V-230V D P2=10,40kW/14hp	1
79	381 33 30		Stator 25-15-6a	3-phase 60 Hz 6-poles 380V D P2=10,40kW/14hp	1
79	381 33 34		Stator 25-15-6a	3-phase 50 Hz 6-poles 380V Y 220V D P2=8,80kW 3-phase 60 Hz 6-poles 440V-460V Y 260V D P2=10,40kW/14hp	1
79	381 33 37		Stator 25-15-6a	3-phase 60 Hz 6-poles 440V-460V YSER 220V-230V Y// P2=10,40kW/14hp	1
79	381 33 38		Stator 25-15-6a	3-phase 50 Hz 6-poles 660V Y 380V D P2=8,80kW 3-phase 60 Hz 6-poles 440V-460V D P2=10,40kW/14hp	1
79	381 33 40		Stator 25-15-6a	3-phase 50 Hz 6-poles 400V D P2=8,80kW 3-phase 60 Hz 6-poles 400V D P2=10,40kW/14hp	1
79	381 33 44		Stator 25-15-6a	3-phase 50 Hz 6-poles 400V-440V D P2=8,80kW 3-phase 60 Hz 6-poles 480V D P2=10,40kW/14hp	1

Pos. No	Part. No	Type	Denomination	Qty/Version
				350
79	381 33 52		Stator 25-15-6a 3-phase 50 Hz 6-poles 500V-550V D P2=8,80kW	1
79	381 33 01		Stator 25-15-6a 3-phase 60 Hz 6-poles 575V-600V D P2=10,40kW/14hp	1
79	381 33 02		Stator 25-15-6a 3-phase 50 Hz 6-poles 400V Y 230V D P2=8,80kW	1
79	381 33 02		Stator 25-15-6a 3-phase 50 Hz 6-poles 690V D P2=8,80kW	1
79	381 33 39		Stator 25-15-6a 3-phase 50 Hz 6-poles 690V Y 400V D P2=8,80kW	1
81	550 40 00		Insulating plate	1
101	504 78 09		Cable unit (FLS)	1
102	504 78 02		Cable unit (FLS,CLS30)	1
102	543 83 00		Cable unit (FLS,CLS30)	1
103	518 89 02		Leakage sensor (FLS)	1
104	505 12 00		Leakage sensor (CLS30)	1
105	635 38 00		Bearing housing	1
105	635 38 02		Bearing housing Water in oil supervision : CLS Leakage detector in the stator house :FLS Water in oil supervision : CLS	1
107	82 59 08		Retaining ring SGA 45	1
108	82 44 17		Supporting washer 45X55X3	2
109	83 36 94		Ball bearing 3309 C3 45X100X39.7	1
110	510 84 00		Bearing cover	1
111	82 74 12		O-ring 99.1X5.7 NBR	1
112	81 41 08		Hexagon head screw M8X35-A2-70	3
113	82 35 16		Plain washer 8.4X16X1.6-A2-140HV	3
114	640 63 30		Mechanical seal	1
120	428 22 17		Inspection screw BRASS	1
121	82 70 34		Plug	2
122	82 73 90		O-ring 19.2X3 NBR	1
122	82 77 30		O-ring 28.17X3.53-1 NBR	2
123	461 77 00		Sleeve	1
129	620 75 00		Oil housing bottom	1
130	82 75 03		O-ring 299.3X5.7 NBR	2
133	82 00 71		Hex.socket hd screw M12X40-A2-70	3
134	381 61 00		Washer 50X45X1.5	1
135	306 73 00		Screw with barrel	6
136	302 21 00		Compression spring	6
137	382 83 01		Wear protection	1
141	384 00 09		Mechanical seal WCCR/WCCR FPM	1
145	80 95 37		Stud 12X75-A2-70	6
147	82 23 59		Hexagon nut M12-A2-70	6
148	80 70 69		Parallel key 10H9X8H11X45	1
149	298 62 09		Washer 38.5X57X0.3	4

Pos. No	Part. No	Type	Denomination	Qty/Version
				350
149	298 62 10		Washer 38.5X57X0.5	4
156	396 56 00		Pump housing cover Pump housing LT F DN 150 Drilled acc. to: EN 1092-2 tab. 9 ANSI B16.1-89; tab.5	1
156	455 17 00		Pump housing cover Pump housing HT F DN 100 Drilled acc. to: EN 1092-2 tab. 9 Pump housing HT F DN 100 Drilled acc. to: ANSI B16.1-89; tab.5	1
157	82 74 33		O-ring 199.1X8.4 NBR	1
158	685 32 00		Impeller unit 488 Cutting knife LT 50Hz 3-phase 488 Cutting knife LT 60Hz 3-phase	1
158	548 83 05		Impeller unit 489 LT 50Hz 3-phase	1
158	548 83 00		Impeller unit 490 690 LT 50Hz 3-phase 690 LT 60Hz 3-phase	1
158	548 83 01		Impeller unit 491 691 LT 50Hz 3-phase 491 691 LT 60Hz 3-phase	1
158	548 83 02		Impeller unit 492 LT 50Hz 3-phase 492 LT 60Hz 3-phase 492 LT 60Hz 1-phase	1
158	548 83 03		Impeller unit 493 693 LT 50Hz 3-phase	1
158	549 89 00		Impeller unit 494 HT 50Hz 3-phase	1
158	549 89 01		Impeller unit 495 HT 50Hz 3-phase 495 HT 60Hz 3-phase	1
158	549 89 02		Impeller unit 496 HT 50Hz 3-phase 496 HT 60Hz 3-phase 496 HT 60Hz 1-phase	1
162	403 94 04		Ring	1
169	550 62 00		Hex.sock.hd screw sp M12X193- A2-70 LT	1
169	550 62 01		Hex.sock.hd screw sp M12X154- A2-70 HT	1
191	682 30 00		Suction cover Cutting knife LT	1
191	416 81 00		Suction cover LT	1
191	480 07 00		Suction cover HT	1
191	480 07 01		Suction cover HT	1
192	82 27 29		Lock nut M12-A4-70	3
193	80 95 28		Stud M12X30-A2-70 LT F	3
193	80 95 29		Stud M12X35-A2-70 HT F	3
195	334 71 00		Adjustment washer	15
195	334 71 01		Adjustment washer	9
196	334 71 01		Adjustment washer	3
200	435 33 06		Pump housing LT F DN 150 Drilled acc. to: EN 1092-2 tab. 9 ANSI B16.1-89; tab.5	1
200	445 73 01		Pump housing HT F DN 100 Drilled acc. to: EN 1092-2 tab. 9	1
200	445 73 05		Pump housing HT F DN 100 Drilled acc. to: ANSI B16.1-89; tab.5	1

Pos. No	Part. No	Type	Denomination	Qty/Version	
				350	
205	444 70 00		Discharge con.stat. IN/OUT 140/150MM	Installation P LT DN 150 Ordered separately	1
205	444 70 06		Discharge con.stat. IN/OUT 140/150MM	Installation P LT DN 150 Ordered separately	1
206	255 47 00		Ring		2
209	404 90 01		Sliding bracket unit	J LT J HT	1
209	380 91 00		Sliding bracket		1
210	83 04 53		Hex.socket hd screw M12X45-A4-80		4
211	391 40 00		Discharge connection 4"	Installation S HT DN 100	1
211	391 42 00		Discharge connection 4"	Installation S LT DN 100	1
211	404 71 00		Discharge connection 4"	Installation J LT Installation J LT	1
211	455 18 00		Discharge connection 4"	Installation J HT Installation J HT	1
212	84 34 11		Hexagon head screw M16X80-A2-70		2
212	84 34 34		Hexagon head screw M20X80-A2-70		2
213	82 35 23		Plain washer 17X30X3-A2-170HV		2
213	82 37 29		Plain washer 17X42X8- STEEL-200HV-FZB		2
213	82 35 26		Plain washer 21X37X3-A2-170HV		2
213	82 37 30		Plain washer 21X52X8- STEEL-200HV-FZB		2
215	82 23 61		Hexagon nut M16-A2-70		2
215	82 23 62		Hexagon nut M20-A2-70		2
218	83 04 53		Hex.socket hd screw M12X45-A4-80		2
219	82 50 17		Lock washer M12		1
229	667 40 00		Sticker		2
300	83 58 57		Alarm unit "MINCAS" II		1
325	683 83 00		Cutting knife		1
901	90 17 52		Oil ISO VG 32		*
902	90 20 54		Grease		*



ООО «Бауманс Груп» - официальный партнер фирмы Flygt в России.

Тел: +7 495 121 49 50

Эл. почта: info@baumgroup.ru

Сайт: www.baumgroup.ru